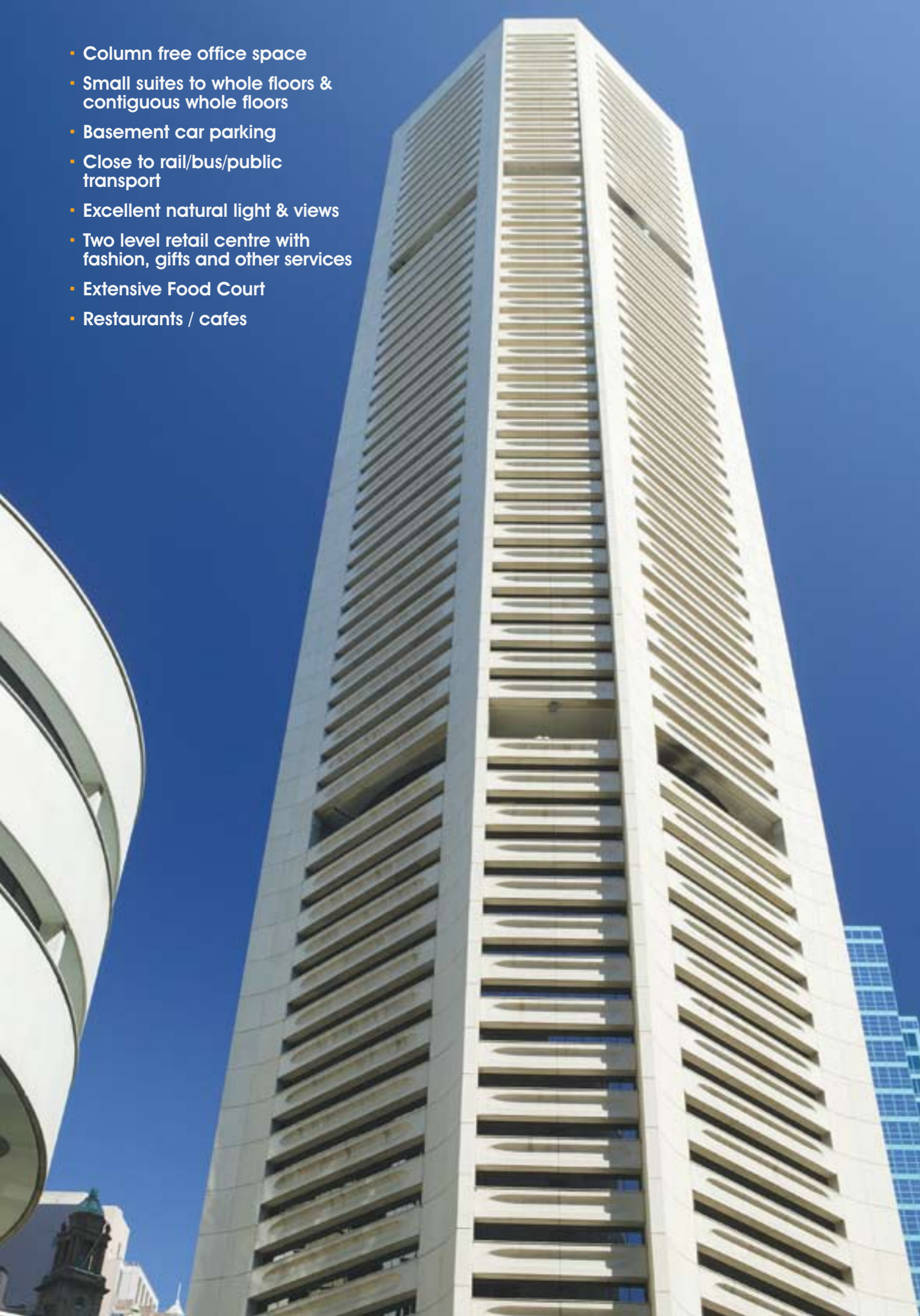
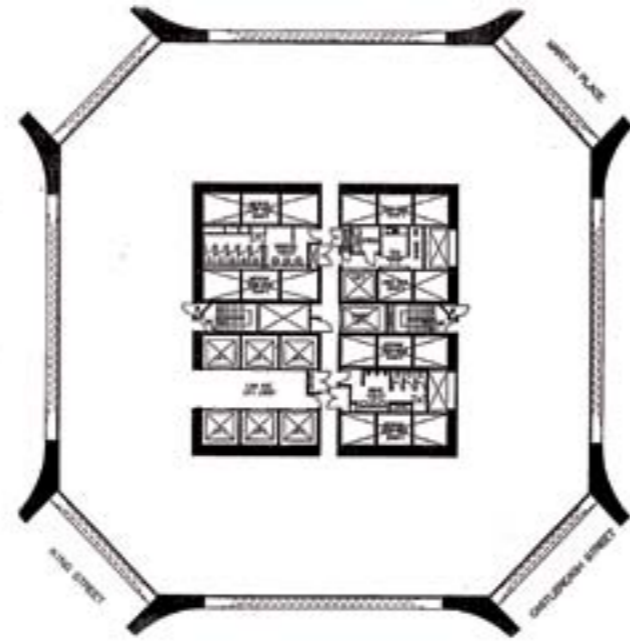


- Column free office space
- Small suites to whole floors & contiguous whole floors
- Basement car parking
- Close to rail/bus/public transport
- Excellent natural light & views
- Two level retail centre with fashion, gifts and other services
- Extensive Food Court
- Restaurants / cafes



FOR LEASE



typical floor plan  
MLC Centre  
Low Rise



1. Australian Stock Exchange
2. Education Department
3. Department of Lands
4. Australia Square
5. Parliament House
6. GPO
7. Westin Hotel
8. Sydney Hospital
9. State & Comm. Law Courts
10. Strand Arcade
11. David Jones
12. Sheraton on the Park
13. Queen Victoria Building
14. Town Hall
15. Central Local Court
16. Downing Centre
17. Family Court



Disclaimer: This information is intended as a guide only and does not constitute advice. It does not constitute any offer or part of any contract for sale or lease otherwise. All details are approximate and have not been independently verified. except where otherwise provided, all references to rent, income or price referred to in this information are GST exclusive. Users should not rely on this information and must make their own enquiries to verify and satisfy themselves of all aspects of the information (including without limitation, any income, rentals, dimensions, areas, zoning and permits). While the information has been prepared in good faith and with due care, no representations or warranties are made (express or implied) as to the accuracy, currency, completeness, suitability or otherwise of such information. Jones Lang LaSalle and Knight Frank, their officers, employees, subcontractors, agents and clients shall not be liable (except to the extent that liability under statute or by operation of law cannot be excluded) to any person for any loss, liability, damage or expense arising from or connected in any way with any use of or reliance on such information. The whole or any part of this document must not be reproduced without written consent from Jones Lang LaSalle. If you wish to request amendments to or deletion of your personal information held by us, please email us at [privacyinfo@ap.joneslanglasalle.com](mailto:privacyinfo@ap.joneslanglasalle.com).



work shop entertain  
in the heart of the city





## work

The **MLC Centre** is one of Sydney's most renowned Office Towers, providing a powerful environment for modern businesses and their staff. Enjoying the sought-after Martin Place as its location, it is one of the most accessible buildings in Sydney's CBD. From the refined, spacious foyer through to the large column-free floor plates, the MLC Centre will exceed expectations with its technology and amenity. Furthermore, the centre is as responsive as it is iconic – conscientiously promoting the employment of sustainable development principals. High profile financial and legal tenants, Commonwealth and State Government departments and corporate head offices are just some of the tenants that now call the MLC Centre home.

## shop

Complementing the office tower is a two level retail centre comprising a vast array of luxury goods and designer clothing brands such as Gucci, Longchamp and Cartier. Indispensable services available include Australia Post, pharmacy, travel agents, dry cleaner, newsagency and several ATMs – all certain to make the MLC Centre the ideal work environment for your team.

## entertain

Indulge yourself or entertain clients at the multitude of cafes, restaurants and bars that make the MLC Centre much more than an office tower and retail outlet. Conceptualising the notion of a 'city within a city', the centre provides a prestige office environment, luxury shopping and the Theatre Royal – as well as stunning outdoor dining facilities and an indoor foodcourt providing over twenty enticing options for coffee, lunch and dinner.

